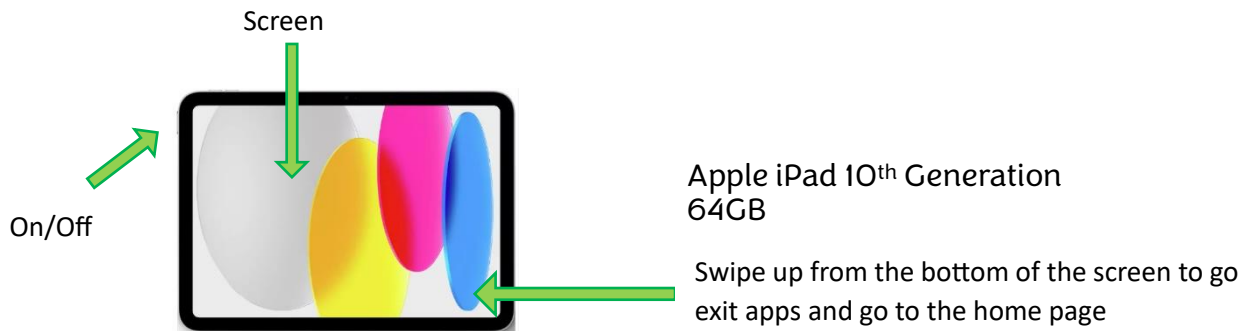


Communication for All How to Guide: Using an Apple iPad 10th Generation



Turning the iPad on and off

Turn on the iPad

Press and hold the on/off button until the Apple logo appears in the centre of the screen.

Turn off the iPad

Press and hold the on/off button until the screen goes black.

Connecting to home WiFi

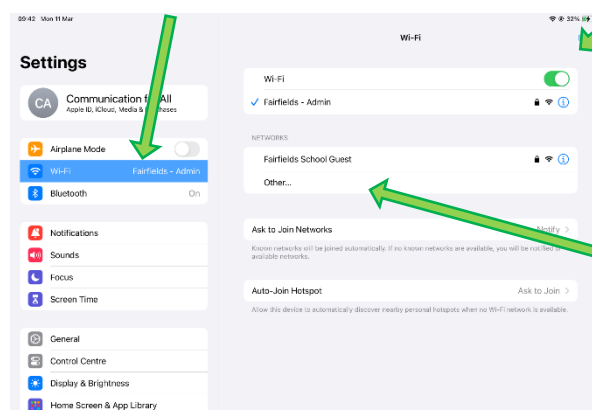
Find your home username and password on the back of your internet router.



Tap the Settings icon to open the iPad settings.

Tap WiFi from the options.

Make sure the green slider is on (it is grey if not).

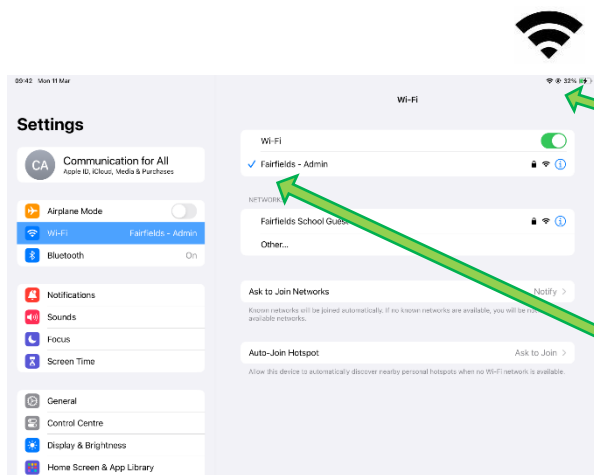
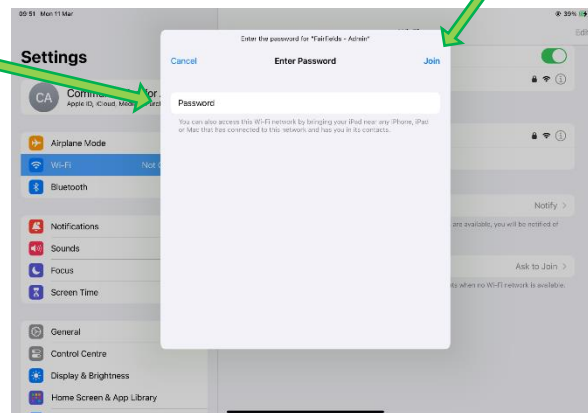


The iPad will search for nearby networks. Select the one that has the same name as your router.

Tap 'Join' once the password has been entered.

When prompted, enter the password for your WiFi.

It is case sensitive.



Once connected, you will see the WiFi icon at the top right of the screen.

And a blue tick next to your Router name.

You are now connected to your home WiFi

Guided Access

Using Guided Access allows you to control what your young person is using their County AAC device for.

Guided Access has already been set up with a passcode. You can find this code on the Loan Form.

Please do not share the code with your young person.

Turning on Guided Access

Ensure that the app your young person uses for communication (e.g. Grid for iPad, Clicker) is open on the iPad.

Triple click the on/off button > tap *Start*

Guided Access is now on.

Turning off Guided Access

Triple click the on/off button > enter the passcode > tap *End*
Guided Access is now off.

Locking Parts of the Screen in Guided Access

You can also lock parts of the screen while in Guided Access. This is most useful for some communication apps that have settings options that can be easily accessed.

Triple click the on/off button > enter the passcode > draw a circle around areas that you want disabled > tap *Start*.

You can remove the locked part of the by:

Triple click the on/off button > enter the passcode > tap the X at the edge of the locked part of the screen.

Software Update

You will need to check regularly for software updates. Updating the iPad will ensure that the communication app is running smoothly and allow the iPad to function well.

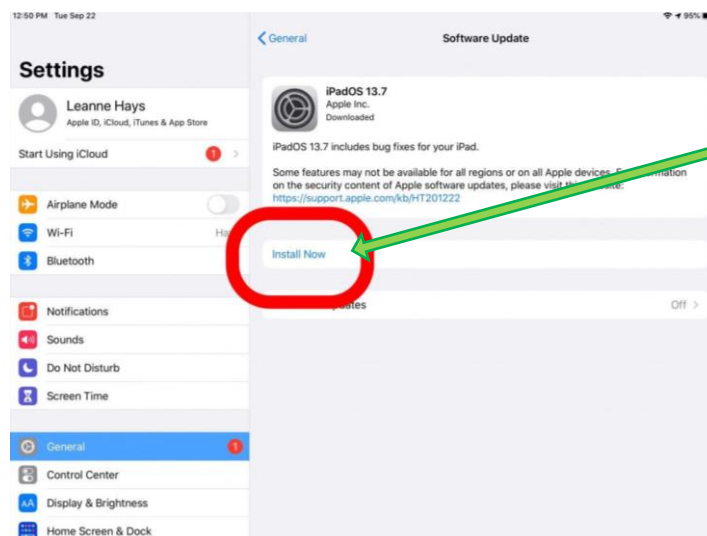


The Settings icon will look like this if it needs to be updated.

Put the iPad on charge and make sure it is connected to the internet.

Open Settings

Tap General > Software Update



Tap Install Now

Follow any on-screen instructions. You may need to agree to new terms and conditions.